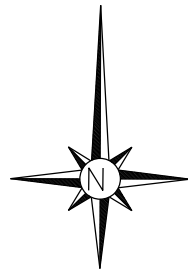


# Colonies #63



SONCY ROAD (LOOP HWY. NO. 335)

**Note:**

This map is for general information only. It may contain errors and / or omissions regarding lot dimensions, prices, legal descriptions, addresses, easements, owner info., etc. For accurate information refer to recorded plat or contact us for verification.

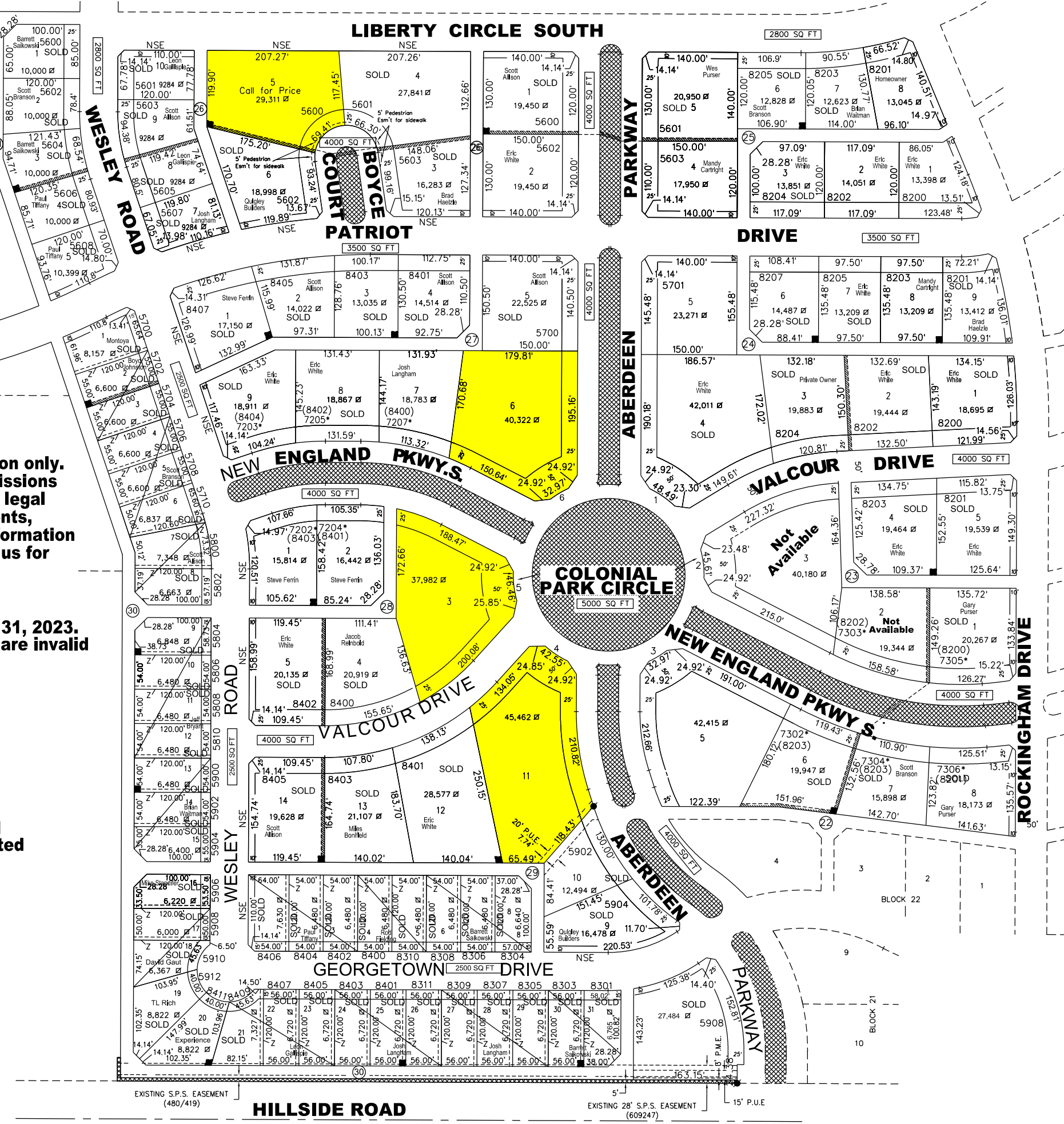
This price map is dated January 31, 2023. Any maps that have a prior date are invalid and are not to be used.

**Setbacks**

- As noted on lot or
- All Georgetown lots 15' front yard setback
- All Wesley Lots 15' front yard setback unless otherwise noted
- All Colonial Park Circle lots 50' front yard setback

**NOTES:**

1. All lot prices are subject to change.
2. This is not a recorded plat. The information contained on this map is for reference only. For accurate information refer to recorded plat.
3. Plat Recording Information: Date - 5-08-15 County - Randall - County Clerk File No. 2015007499
4. ■ - 6' x 6' Transformer Easement
5. = 5' SPS Esm't.
6. All properties are subject to Public Improvement District assessments.
7. NSE - No Side Entry
8. ■ - Public Improvement District Parcels (PID)
9. City Of Amarillo changed addresses on New England as noted
  - \* - Correct Address
  - () - Previous Address



Rockrose Development - 351-2525 or 353-8681  
www.rockroseamarillo.com